

PROPELLER

Catalog For Suzuki Outboards



 **SOLAS[®] RUBEX[™]**

Controlling Every Aspect of Quality

SOLAS aluminum alloy propellers surpass regular stainless steel propellers in terms of thinness, corrosion resistance, and quality. SOLAS has become the world's leading brand of stainless steel and aluminum propellers. Numerous tests conducted by major media authorities have proven that SOLAS propellers stand up to collisions better than the competitors', and that long-term durability studies have shown that SOLAS propellers' resistance against rust and corrosion outperforms all the others in their class.



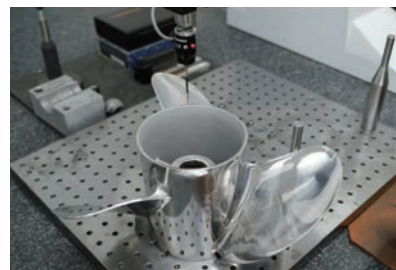
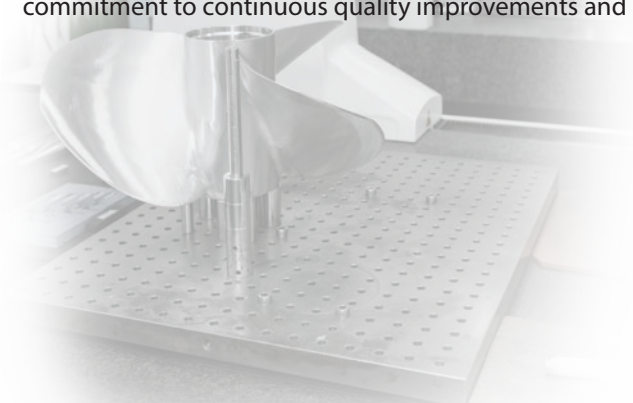
ISO 9001 / ISO 14001 CERTIFIED

We are honored to have BSI (British Standards Institution) ISO 9001 / ISO 14001 certificates and the Symbol of Excellent Products from Taiwan Government. Total satisfaction of our customers is always our first priority.



SOLAS also installed analysis equipment to assist the inspection and testing process, including composition tester, hardness tester, CMM systems, salt spray testing machine, rubber torque tester, and dynamic balance machine. We combine these standard quality inspection procedures with data analysis to improve product design and production processes, therefore increasing customer satisfaction.

In 1994, SOLAS was granted ISO-9002 certification from BSI, the UK certification authority. In May of 2003, SOLAS was awarded ISO-9001 certification (2000AD version). In 2021, Solas was further certified with ISO 14001, international standard of the environmental management system. These quality certifications serve as strong evidence of our commitment to continuous quality improvements and service.



This is a Lite version of the regular Solas Catalog

We have analyzed global propeller sales from the **past 7 years** and listed only the **Bestselling Series** for each horsepower group.

We believe that this market-driven data provides the best reference for engine/propeller matching **in General**.

First part of the catalog covers the application of **Stainless Steel** propellers (**blue** columns), while second part focuses on **Aluminum** propellers (**green** columns).

Rubex propeller part numbers are also listed aside for easy reference.

For specific or special applications, please consult your local dealer for suggestions.

We hope everyone finds the most suitable propeller for your needs and enjoys the performance that Solas propellers deliver.

Thank you!

Stainless Steel High Performance Propellers



LEXOR PROPELLER **Stainless steel 3 blade Rubber Hub**

- * Large diameter & blade area for big boats
- * Great high speed and midrange performance
- * Excellent fuel economy for offshore boats



LEXOR PROPELLER **4 Stainless steel 4 blade Rubber Hub**

- * Excellent top speed & very smooth performance
- * High rake and cupped blade design
- * Great stern lift & acceleration



LEXOR PROPELLER **PLUS Stainless steel 3 blade Rubber Hub**

- * Large diameter & blade area for big boats
- * Larger Diameter than Lexor
- * Great high speed and mid range performance
- * Excellent fuel economy for offshore boats



SG for SUZUKI **Stainless steel 3 blade front & 4 blade rear Rubber Hub**

- * Maximize the efficiency of the engine
- * Great maneuverability
- * Excellent grip and acceleration
- * Outstanding stability



B3 for MERCURY BRAVO 3 **Stainless steel 4 blade front & 3 blade rear Solid hub**

- * Excellent acceleration and top speed
- * Cupped blade design increases bite & reduces slip
- * Great maneuverability and efficiency

Stainless Steel High Performance Propellers



HR TITAN 3 PROP Stainless steel 3 blade Rubber Hub

- * Performance prop for high speed planing hulls
- * High rake blade design provides excellent bow lift
- * Excellent acceleration and top speed
- * Cupped blade design increases bite & reduces slip



HR TITAN 4 PROP Stainless steel 4 blade Rubber Hub

- * Great stern lift & acceleration
- * High rake and cupped blade design
- * Powerful thrust & very smooth performance
- * Increased speed & economy in the mid-range



NEW SATURN PROP Stainless steel 3 blade Rubber Hub

- * All-around performance
- * Good acceleration
- * Large ear blade design



TITAN PROP Stainless steel 3 blade Rubber Hub

- * Performance prop for high speed planing hulls
- * High rake blade design provides excellent bow lift
- * Excellent acceleration and top speed
- * Cupped blade design increases bite & reduces slip



NEW SATURN 4 PROP Stainless steel 4 blade Rubber Hub

- * All-around performance
- * Great Acceleration and Midrange performance
- * Large ear blade design

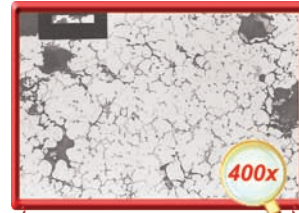


SATURN PROP Stainless steel 3 blade Rubber Hub

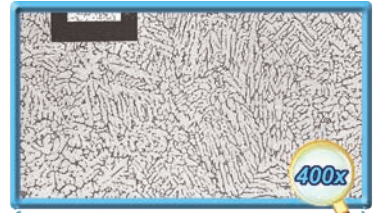
- * All-around general purpose performance
- * A more durable and cost effective replacement for aluminum

Unparalleled Durability

Solas aluminum propellers are manufactured with state-of-the-art squeeze casting process. With this exclusive technique, Solas aluminum propellers are almost non-porous and thus stronger and tougher than traditional die cast propellers.



Standard Die Cast



SOLAS Squeeze Cast



Cutting-face
Other brand's prop



Cutting-face
SOLAS Prop

About SOLAS Coating



1st Coat Baked Surface Paint
Cutting-face
Other brand's coating



1. Al. protected coating
2. primary coating
3. 1st Coat Baked Surface Paint
4. 2nd Coat Baked Surface Paint
Cutting-face
SOLAS Prop



Salt Water Spray Testing

SOLAS aluminum propellers have 4 layers of paint. Using superior coatings and a high-tech painting process ensures excellent anti-corrosion performance.

SOLAS aluminum propellers are exposed to over 500 hours of testing in a salt water spray tank. This testing simulates more than 6 months of normal salt water use.

Aluminum High Performance Propellers



AMITA 3 Aluminum 3 blade Rubber Hub

- * Exclusive squeeze cast process
- * Stronger blades with better performance
- * Outstanding acceleration and top speed



AMITA 3-C Plus Aluminum 3 blade Rubber Hub

AMITA 3-E Plus Aluminum 3 blade Rubber Hub

- * Exclusive squeeze cast process
- * Stronger blades with better performance
- * Larger blades than the Amita 3 series for Superior thrust
- * Suitable for heavy boats



AMITA 4 Aluminum 4 blade Rubber Hub

- * Exclusive squeeze cast process
- * Stronger blades with better performance
- * Great Acceleration and Midrange performance
- * Great stern lift & handling



High Thrust Propeller

Aluminum 4 blade / Rubber hub

- * Exclusive squeeze cast process
- * Stronger blades with better performance
- * Excellent forward and reverse thrust
- * Ideal for kicker / auxiliary engines with heavy loads



Aluminum Bravo Two

for Mercruiser
4.3L ~ 7.4L / D 2.8 L ~ D 7.3 L
350Mag, 454Mag, 502 Mag

Aluminum 3 blade / Rubber hub

- * Exclusive squeeze cast process
- * Stronger blades with better performance
- * Larger blades than the Amita 3 series for Superior thrust
- * Suitable for heavy boats

A 8~20 Horsepower / 2-1/2" Gearcase (10 Tooth Spline & Thru Hub Exhaust)

DF 8A (4-Stroke) ... 2011-Newer
DT 9.9 83 ~ 87
DF 9.9 (4-Stroke) ... 96 ~

DF 9.9A / DF 9.9B (4-Stroke) ... 2010 ~
DT 15 83 ~ 88
DT 15C 89 ~ 97

DF15 (4-Stroke) ... 96 ~ 2012
9.9 C and 9.9 CN not applicable
DF15A, DF20A 07 ~ 17

Pressed-in Propellers

SATURN

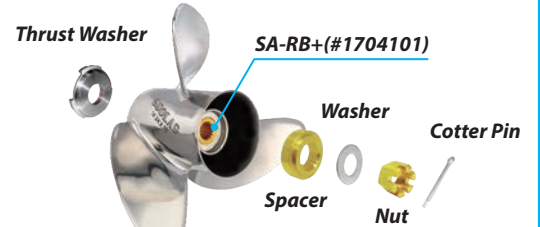
B	D	P	R	PART NO.
3	9 1/4	7	R	4121-093-07A
3	9 1/4	8	R	4121-093-08A
3	9 1/4	9	R	4121-093-09A
3	9 1/4	10	R	4121-093-10A
3	9 1/4	11	R	4121-093-11A
3	9 1/4	12	R	4121-093-12A

Replacement parts:

Thrust Washer	Washer	Nut	Cotter Pin
SATW	SAWS	SANT	C pin(1 1/2")
KITS part # : 17041501A			

*Original OEM hardware is required, or purchase the replacements

*A version supersede non A version.
Non A version not applicable DF15A & DF20A



• Picture May not be exact to your application. Please consult your owner's manual.

B 20 ~ 30 Horsepower / 3" Gearcase (10 Tooth Spline & Thru Hub Exhaust)

DT 20 83 ~ 88
DT 25, 25C 83 ~ 88
DT 25 (Includes V-Twin) ... 2000~

DF 25R 2010 ~
DF 25A 2014 ~
DT 30, 30C ... 83 ~ 97

DF 30 00 ~ 07
DF 30A 2014 ~

Pressed-in Propellers

NEW SATURN

B	D	P	R	PART NO.
3	10 3/4	10	R	4231-108-10
3	10 1/2	11	R	4231-105-11
3	10 1/4	12	R	4231-103-12
3	10 1/8	13	R	4231-101-13
3	10	14	R	4231-100-14
3	10	15	R	4231-100-15

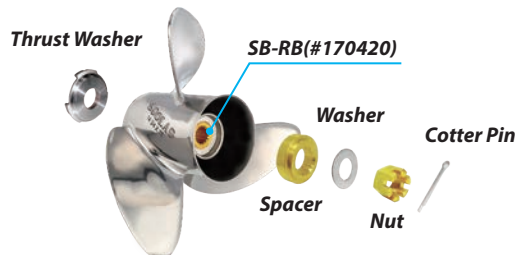
HR TITAN4

B	D	P	R	PART NO.
4	10	10	R	4253-100-10
4	10	11	R	4253-100-11
4	10	12	R	4253-100-12

Replacement parts:

Thrust Washer	Spacer	Washer	Nut	Cotter Pin
SBTW	SBSP	YBWS	SBNT	C pin(1 1/2")
KITS part # : 17042501				

*Original OEM hardware is required, or purchase the replacements



• Picture May not be exact to your application. Please consult your owner's manual.

C 35~65 Horsepower / 3-1/4" Gearcase (13 Tooth Spline & Thru Hub Exhaust)

DT 35C 87 ~ 89	DT 50, 50M 83 ~ 84	DT 60 83 ~ 84
DT 40 83 ~ 98	DT 50 (4-Stroke) 99 ~	DF 60A (4-Stroke) ... 2010 ~
DF 40 (4-Stroke) ... 99 ~ 00	DF 50A (4-Stroke) ... 2010 ~	DT 65 85 ~ 97
DF 40A 2010 ~	DF 55 85 ~ 97	

Pressed-in Propellers

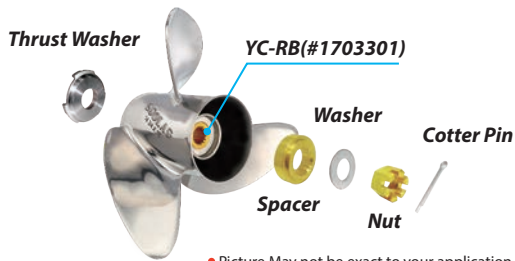
NEW SATURN

B	D	P	R	PART NO.
3	12	8	R	4331-120-08
3	12	9	R	4331-120-09
3	11 7/8	10	R	4331-119-10
3	11 5/8	11	R	4331-116-11
3	11 3/8	12	R	4331-114-12
3	11 1/8	13	R	4331-111-13
3	11 1/8	14	R	4331-111-14
3	11	15	R	4331-110-15

Replacement parts:

	Thrust Washer	Spacer	Washer	Nut	Cotter Pin
	SCTW	SCSP	YDWS	YENT	EPin(2")
c					
	KITS part # : 17043501				

*Original OEM hardware is required, or purchase the replacements



• Picture May not be exact to your application. Please consult your owner's manual.

Interchangeable Hub Propellers

RUBEX NS3 RBX

PART NO.	Hub kits
9331-116-11	+ RBX-115
9331-114-12	
9331-111-13	
9331-111-14	
9331-110-15	

RBX-115



D 50~140 Horsepower / 4-1/4" Gearcase (13 Tooth Spline & Thru Hub Exhaust)

DF 60 (4-Stroke) 98 ~ 09	DT 85 79 ~ 00	DT 115 81 ~ 01
DF 70 (4-Stroke) 98 ~ 08	DT 90 89 ~ 97	DT 140 81 ~ 01
DT 75 83 ~ 97	DT 100 89 ~ 00	

Pressed-in Propellers

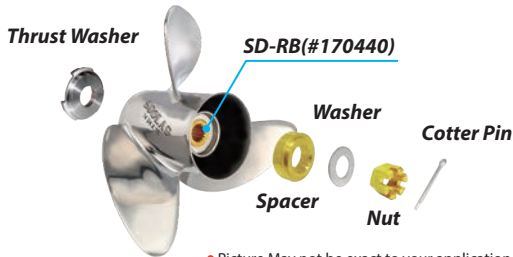
NEW SATURN

B	D	P	R	PART NO.
3	14	11	R	4431-140-11
3	13 3/4	13	R	4431-138-13
3	13 3/4	13	L	
3	13 1/2	15	R	4431-135-15
3	13 1/2	15	L	
3	13 1/4	17	R	4431-133-17
3	13 1/4	17	L	
3	13	19	R	4431-130-19
3	13	19	L	
3	13	21	R	4431-130-21

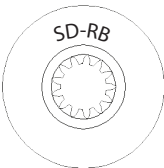
Replacement parts:

	Thrust Washer	Spacer	Washer	Nut	Cotter Pin
D	Original SUZUKI Part	Original SUZUKI Part	Original SUZUKI Part	Original SUZUKI Part	Original SUZUKI Part

*Original OEM hardware is required, or purchase the replacements



• Picture May not be exact to your application. Please consult your owner's manual.



Warning:
For DF70/DF100 produced between 2008~2009 and after 2009 might be with different fitting, consulting with your nearest dealer for more information.

Interchangeable Hub Propellers

RUBEX NS3 RBX™

PART NO.	Hub kits
9431-138-13	RBX-110 or RBX-110B
9432-138-13	
9431-135-15	
9432-135-15	
9431-133-17	
9432-133-17	
9431-130-19	
9432-130-19	
9431-130-21	



D+ 4-1/4" Gearcase (15 Tooth Spline & Thru Hub Exhaust)

DF 70A 09 ~	DF 100 09 ~ 12	DF 115 01 ~ 12	DF 140 02 ~ 12
DF 80A 09 ~	DF 100A 2013 ~	DF 115A 2013 ~	DF 140A 2013 ~
DF 90 01 ~ 08	DF 100B 2018 ~	DF 115B 2024 ~	DF 140B 2024 ~
DF 90A 09 ~	DF 100C 2024 ~		

Pressed-in Propellers

HRTITAN3

B	D	P	R	PART NO.
3	13 7/8	15	R	3451-139-15
3	13 7/8	15	L	3452-139-15
3	13 7/8	17	R	3451-139-17
3	13 7/8	17	L	3452-139-17
3	13 7/8	19	R	3451-139-19
3	13 7/8	19	L	3452-139-19
3	13 7/8	21	R	3451-139-21
3	13 7/8	21	L	3452-139-21
3	13 7/8	23	R	3451-139-23
3	13 7/8	23	L	3452-139-23
3	13 7/8	25	R	3451-139-25

Replacement parts:

Kits for DF 90/100/115

Thrust Washer	Spacer	Washer	Nut	Cotter Pin
SDTW1	SDSP	YDWS	YENT	Epini(2*)

KITS part # : 17044501

Kits for DF 100A/115A/140/140A 115B/and counter rotation Model Z

Thrust Washer	Spacer	Washer	Nut	Cotter Pin
SDTW2	SDSP	YDWS	YENT	Epini(2*)

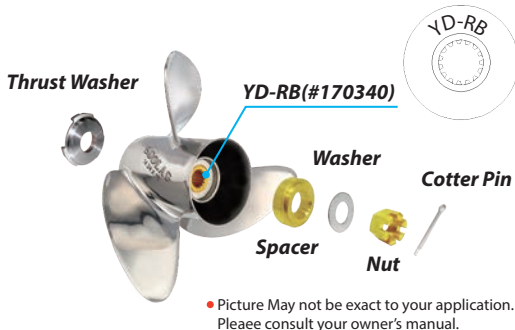
KITS part # : 17044502

Kits for DF 70A/80A/90A/100B

Thrust Washer	Spacer	Washer	Nut	Cotter Pin
SDTW3	SDSP	YDWS	YENT	Epini(2*)

KITS part # : 17044503

*Original OEM hardware is required, or purchase the replacements



Interchangeable Hub Propellers

RUBEX™ HR3	RBX™	RBX™	RBX™
PART NO.	Hub kits	Hub kits	Hub kits
9451-139-15	RBX-150 or RBX-150B	RBX-125 or RBX-125B	RBX-126 or RBX-126B
9452-139-15			
9451-139-17			
9452-139-17			
9451-139-19			
9452-139-19			
9451-139-21			
9452-139-21			
9451-139-23			
9452-139-23			
9451-139-25			
	DF 70A09 ~ DF 80A09 ~ DF 90A09 ~	DF 90 ...01~08 DF 100 ..09~12 DF 115 ..01~12	DF 115A ...2013~ DF 140 ...02~12 DF 140A ...2013~

Cotter Pin
(Original Part)
not included in kit

Nut
(Original Part)
not included in kit

Aft Spacer
(#81053441)
included in kit

RUBEX Propeller

RBX-150 **RBX-150B**

RBX Hub (#17015300) included in kit

RBX Hub (#17015304) included in kit

For Salt water

Thrust Washer (#81013441) included in kit

Cotter Pin
(Original Part)
not included in kit

Nut
(Original Part)
not included in kit

RBX-125 **RBX-126** **RBX-125B** **RBX-126B**

Flat Washer (#8104134) included in kit

Flat Washer (#81061140) included in kit

Aft Spacer (#81053150) included in kit

RUBEX Propeller

RBX-125 **RBX-126** **RBX-125B** **RBX-126B**

RBX Hub (#17015300) included in kit

RBX Hub (#17015304) included in kit

For Salt water

Thrust Washer (#81013440) included in kit

Thrust Washer (#81013150) included in kit

E 150~300 Horsepower(4-stroke) / 4-3/4" Gearcase (15 Tooth Spline & Thru Hub Exhaust)
DF 150, 175, 200, 225, 250, 300 (All Year)

Pressed-in Propellers



B	D	P	R	PART NO.
3	15 3/4	15	R	4571-158-15
3	15 3/4	15	L	4572-158-15
3	15 5/8	16	R	4571-156-16
3	15 5/8	16	L	4572-156-16
3	15 1/2	17	R	4571-155-17
3	15 1/2	17	L	4572-155-17
3	15 3/8	18	R	4571-154-18
3	15 3/8	18	L	4572-154-18
3	15 1/4	19	R	4571-153-19
3	15 1/4	19	L	4572-153-19
3	15 1/8	20	R	4571-151-20
3	15 1/8	20	L	4572-151-20
3	15	21	R	4571-150-21
3	15	21	L	4572-150-21
3	14 7/8	22	R	4571-149-22
3	14 7/8	22	L	4572-149-22
3	14 3/4	23	R	4571-148-23
3	14 3/4	23	L	4572-148-23
3	14 1/2	25	R	4571-145-25
3	14 1/2	25	L	4572-145-25
3	14 1/2	27	R	4571-145-27
3	14 1/2	27	L	4572-145-27



B	D	P	R	PART NO.
3	16	13	R	
3	16	13	L	
3	16	15	R	
3	16	15	L	
3	16	17	R	4571-160-17
3	16	17	L	4572-160-17
3	16	19	R	4571-160-19
3	16	19	L	4572-160-19
3	15 3/4	21	R	4571-158-21
3	15 3/4	21	L	4572-158-21
3	15 5/8	23	R	4571-156-23
3	15 5/8	23	L	4572-156-23

Interchangeable Hub Propellers

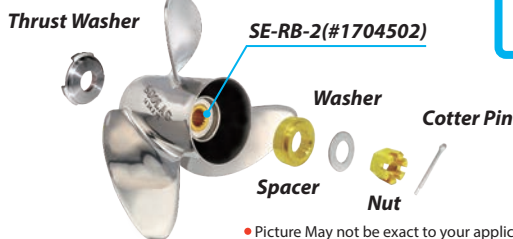


PART NO.	Hub kits
9571-158-15	
9572-158-15	
9571-156-16	
9572-156-16	
9571-155-17	
9572-155-17	
9571-154-18	
9572-154-18	
9571-153-19	
9572-153-19	
9571-151-20	+
9572-151-20	RBX-104 or RBX-104B
9571-150-21	
9572-150-21	
9571-149-22	
9572-149-22	
9571-148-23	
9572-148-23	
9571-145-25	
9572-145-25	
9571-145-27	
9572-145-27	



PART NO.	Hub kits
* 9571-160-13	
* 9572-160-13	
9571-160-15	
9572-160-15	
9571-160-17	
9572-160-17	
9571-160-19	+
9572-160-19	RBX-104 or RBX-104B
9571-158-21	
9572-158-21	
9571-156-23	
9572-156-23	

* Lab finished version



• Picture May not be exact to your application. Please consult your owner's manual.

Replacement parts:

Thrust Washer	Spacer	Washer	Nut	Cotter Pin
SETW	SESP	YDWS	YENT	Epini(2")
KITS part #: 17045501				

*Original OEM hardware is required, or purchase the replacements

E 150~300 Horsepower(4-stroke) / 4-3/4" Gearcase (15 Tooth Spline & Thru Hub Exhaust)
DF 150, 175, 200, 225, 250, 300 (All Year)

Pressed-in Propellers



B	D	P	R	PART NO.
4	15 1/4	18	R	4573-153-18
4	15 1/4	18	L	4574-153-18
4	15 1/4	20	R	4573-153-20
4	15 1/4	20	L	4574-153-20
4	15 1/4	22	R	4573-153-22
4	15 1/4	22	L	4574-153-22
4	15 1/4	24	R	4573-153-24
4	15 1/4	24	L	4574-153-24
4	15 1/4	26	R	4573-153-26
4	15 1/4	26	L	4574-153-26
4	15 1/4	28	R	4573-153-28

Replacement parts:

Thrust Washer	Spacer	Washer	Nut	Cotter Pin
SETW	SESP	YDWS	YENT	#pin(2")

KITS part #: 17045501

*Original OEM hardware is required, or purchase the replacements

Interchangeable Hub Propellers

PART NO.	Hub kits
9573-153-18	RBX-104 or RBX-104B
9574-153-18	
9573-153-20	
9574-153-20	
9573-153-22	
9574-153-22	
9573-153-24	
9574-153-24	
9573-153-26	
9574-153-26	
9573-153-28	



E 150~225 Horsepower(2-stroke) / 4-3/4" Gearcase (15 Tooth SPLINE & THRU HUB EXHAUST)

DT 150 86 ~ 03

DT 175 86 ~ 92

DT 200 86 ~ 00

DT 225 86 ~ 03

Pressed-in Propellers



B	D	P	R	PART NO.
3	14 1/2	15	R	4531-145-15
3	14 1/2	15	L	4532-145-15
3	14 1/4	17	R	4531-143-17
3	14 1/4	17	L	4532-143-17
3	14	19	R	4531-140-19
3	14	19	L	4532-140-19
3	14	21	R	4531-140-21
3	14	21	L	4532-140-21
3	14	23	R	4531-140-23
3	14	23	L	4532-140-23
3	14	25	R	4531-140-25

Replacement parts:

Thrust Washer	Spacer	Washer	Nut	Cotter Pin
SETW	SESP	YDWS	YENT	#pin(2")

KITS part #: 17045501

*Original OEM hardware is required, or purchase the replacements

Interchangeable Hub Propellers

PART NO.	Hub kits
9531-145-15	RBX-104 or RBX-104B
9532-145-15	
9531-143-17	
9532-143-17	
9531-140-19	
9532-140-19	
9531-140-21	
9532-140-21	
9531-140-23	
9532-140-23	
9531-140-25	



G Dual Prop System
(Front 25 Tooth Spline / Rear 15 Tooth Spline & Thru Hub Exhaust)

SG

B	D	P	R	PART NO.
3	15 1/2	18	Front	4652-155-180
3	15 1/2	19.5	Front	4652-155-195
3	15 1/2	21	Front	4652-155-210
3	15 1/2	22.5	Front	4652-155-225
3	15 1/2	24	Front	4652-155-240
3	15 1/2	25.5	Front	4652-155-255
4	14 1/8	18	Rear	4653-141-180
4	14 1/8	19.5	Rear	4653-141-195
4	14 1/8	21	Rear	4653-141-210
4	14 1/8	22.5	Rear	4653-141-225
4	14 1/8	24	Rear	4653-141-240
4	14 1/8	25.5	Rear	4653-141-255

※ Strongly recommend to pair Front and Rear SG propellers with the same pitch.

SG Rubber Hub

PART NO.	DESCRIPTION	
17047301	SG(F)-RBX	
17047302	SG(R)-RBX	

SG Hardware

PART NO.	DESCRIPTION	DESCRIPTION			
		SGFTW	SGFSP	SGFWS	SGFNT
17047501	SGF PKT				

PART NO.	DESCRIPTION	DESCRIPTION				
		SGRTW	SGRSP	YDWS	YENT	EPIN
17047502	SGR PKT					

SOLAS

Dual Props



DUAL PROPS



DF300B DF325A DF350A



Stainless Steel
3 Blade Front & 4 Blade Rear
Rubber Hub Propeller

- Maximize the efficiency of the engine by turning the horsepower into propulsion under water more efficiently
- Great maneuverability
- Excellent grip and acceleration
- Outstanding stability by each prop rotating in a different direction



2.5 HP (10 Tooth Spline)
DF 2.5 (4-Stroke) 2010 ~

4 ~ 6 HP (10 Tooth Spline)
DF4 2004 ~ Newer DF6 2004 ~ Newer

Pressed-in Propellers

AMITA 3

B	D	P	R	PART NO.
3	7.25	5	R	4011-073-05S

AMITA 3

B	D	P	R	PART NO.
3	7.875	6.75	R	4011-079-07S



A 8 ~ 20 Horsepower / 2-1/2" Gearcase (10 Tooth Spline & Thru Hub Exhaust)

DF 8A (4-Stroke) ... 2011 ~ Newer
DT 9.9 83 ~ 87
DF 9.9 (4-Stroke) ... 96 ~

DF 9.9A / DF 9.9B (4-Stroke) ... 2010 ~
DT 15 83 ~ 88
DT 15C 89 ~ 97

DF 15 (4-Stroke) ... 96 ~ 2012
9.9 C and 9.9 CN not applicable
DF 15A, DF 20A 2013 ~ Newer

Pressed-in Propellers

AMITA 3

B	D	P	R	PART NO.
3	9.25	7	R	4111-093-07A
3	9.25	8	R	4111-093-08A
3	9.25	9	R	4111-093-09A
3	9.25	10	R	4111-093-10A
3	9.25	11	R	4111-093-11A
3	9.25	12	R	4111-093-12A

AMITA 4

B	D	P	R	PART NO.
4	9.25	7	R	4113-093-07A
4	9.25	8	R	4113-093-08A
4	9.25	9	R	4113-093-09A
4	9.25	10	R	4113-093-10A
4	9.25	11	R	4113-093-11A

AMITA 4

B	D	P	R	PART NO.
4	10	5	R	4113-100-05A
4	10	7	R	4113-100-07A

High Thrust Propeller

Excellent forward and reverse thrust.
Ideal for kicker/auxiliary engines with heavy loads

Replacement parts:

	Thrust Washer	Washer	Nut	Cotter Pin
A	SATW	SAWS	SANT	C-pin(1 1/2")

KITS part # : 17041501A

*Original OEM hardware is required, or purchase the replacements

Interchangeable Hub Propellers

RUBEX 3

RBX

PART NO.	Hub kits
9111-093-07	+ RBX-A40
9111-093-08	
9111-093-09	
9111-093-10	
9111-093-11	
9111-093-12	

RBX-A40

Cotter Pin
(Original Part)
not included in kit

Nut
(Original Part)
not included in kit

Washer
(Original Part)
not included in kit

Aft Spacer
(#81058410)
included in kit

RBX Hub
(#731461040)
included in kit



OEM Thrust Washer
(Supplied with engine)

B 20 ~ 30 Horsepower / 3" Gearcase (10 Tooth Spline & Thru Hub Exhaust)

DT 20 83 ~ 88	DT 25R 2010 ~	DT 30 00 ~ 07
DT 25, 25C 83 ~ 00	DT 25A 2014 ~	DT 30A 2014 ~
DF 25 (Includes V-Twin) ... 2000 ~	DT 30, 30C 83 ~ 97	

Pressed-in Propellers

AMITA 3

B	D	P	R	PART NO.
3	11	9	R	4211-110-09
3	10.8	10	R	4211-108-10
3	10.5	11	R	4211-105-11
3	10.3	12	R	4211-103-12
3	10.1	13	R	4211-101-13
3	10	14	R	4211-100-14
3	10	15	R	4211-100-15

AMITA 4

B	D	P	R	PART NO.
4	10.2	11	R	4213-102-11
4	10.1	12	R	4213-101-12
4	10	13	R	4213-100-13
4	10	14	R	4213-100-14
4	10	15	R	4213-100-15

Replacement parts:

Thrust Washer	Spacer	Washer	Nut	Cotter Pin
SBTW	SBSP	YBWS	SBNT	C pin(1 1/2")

KITS part #: 17042501

*Original OEM hardware is required, or purchase the replacements

Interchangeable Hub Propellers

RUBEX ³	RBX [™]
PART NO.	Hub kits
9211-110-09SB	+ RBX-B40
9211-108-10SB	
9211-105-11SB	
9211-103-12SB	
9211-101-13SB	
9211-100-14SB	
9211-100-15SB	

RBX-B40



C 35 ~ 65 Horsepower / 3-1/4" Gearcase (13 Tooth Spline & Thru Hub Exhaust)

DT 35C 87 ~ 89	DT 50, 50M 83 ~ 84	DT 60 83 ~ 84
DT 40 83 ~ 98	DT 50 (4-Stroke) 99 ~	DF 60A (4-Stroke) ... 2010 ~
DF 40 (4-Stroke) ... 99 ~ 00	DF 50A (4-Stroke) ... 2010 ~	DF 65 85 ~ 97
DF 40A 2010 ~	DF 55 85 ~ 97	

Pressed-in Propellers

AMITA 3-C Plus

B	D	P	R	PART NO.
3	12	10	R	4311-120-10
3	11.8	11	R	4311-118-11
3	11.6	12	R	4311-116-12
3	11.6	13	R	4311-116-13
3	11.6	14	R	4311-116-14
3	11.4	15	R	4311-114-15
3	11.4	16	R	4311-114-16

AMITA 4

B	D	P	R	PART NO.
4	11.8	9	R	4313-118-09
4	11.4	10	R	4313-114-10
4	11.1	11	R	4313-111-11
4	10.8	12	R	4313-108-12
4	10.5	13	R	4313-105-13
4	10.5	14	R	4313-105-14

Replacement parts:

Thrust Washer	Spacer	Washer	Nut	Cotter Pin
SCTW	SCSP	YDWS	YENT	Epin(2")

KITS part #: 17043501

*Original OEM hardware is required, or purchase the replacements

D 50~140 Horsepower / 4-1/4" Gearcase (13 Tooth Spline & Thru Hub Exhaust)

DF 60 (4-Stroke)	98 ~ 09	DT 85	79 ~ 00	DT 115	81 ~ 01
DF 70 (4-Stroke)	98 ~ 08	DT 90	89 ~ 97	DT 140	81 ~ 01
DT 75	83 ~ 97	DT 100	89 ~ 00		

Pressed-in Propellers

AMITA 3

B	D	P	R	PART NO.
3	14	9	R	4411-140-09
3	14	11	R	4411-140-11
3	13.75	13	R	4411-138-13
3	13.5	14	R	4411-135-14
3	13.5	15	R	4411-135-15
3	13.5	16	R	4411-135-16
3	13.25	17	R	4411-133-17
3	13.25	18	R	4411-133-18
3	13	19	R	4411-130-19
3	13	21	R	4411-130-21

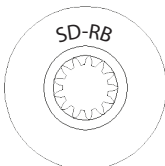
AMITA 4

B	D	P	R	PART NO.
4	13.25	13	R	4413-133-13
4	13	15	R	4413-130-15
4	12.75	17	R	4413-128-17
4	12.5	19	R	4413-125-19
4	12.5	21	R	4413-125-21

Replacement parts:

	Thrust Washer	Spacer	Washer	Nut	Cotter Pin
D	Original SUZUKI Part	Original SUZUKI Part	Original SUZUKI Part	Original SUZUKI Part	Original SUZUKI Part

*Original OEM hardware is required, or purchase the replacements

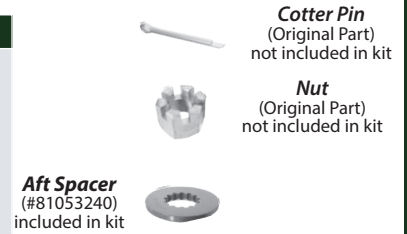


Warning:
For DF70/DF100 produced between 2008~2009 and after 2009 might be with different fitting, consulting with your nearest dealer for more information.

Interchangeable Hub Propellers

RUBEX 3

PART NO.	Hub kits
9411-140-09	RBX-110 + or RBX-110B
9411-140-11	
9411-138-13	
9411-135-14	
9411-135-15	
9411-135-16	
9411-133-17	
9411-133-18	



RUBEX 4

PART NO.	Hub kits
9413-133-13	RBX-110 + or RBX-110B
9413-130-15	
9413-128-17	
9413-125-19	



D+ 4-1/4" Gearcase (15 Tooth Spline & Thru Hub Exhaust)

DF 70A 09 ~	DF 100 09 ~ 12	DF 115 01 ~ 12	DF 140 02 ~ 12
DF 80A 09 ~	DF 100A 2013 ~	DF 115A 2013 ~	DF 140A 2013 ~
DF 90 01 ~ 08	DF 100B 2018 ~	DF 115B 2024 ~	DF 140B 2024 ~
DF 90A 09 ~	DF 100C 2024 ~		

Pressed-in Propellers

AMITA 3

B	D	P	R	PART NO.
3	13.875	17	R	3411-139-17
3	13.875	19	R	3411-139-19
3	13.875	21	R	3413-139-21

AMITA 4

B	D	P	R	PART NO.
4	13.75	15	R	3413-138-15
4	13.75	17	R	3413-138-17
4	13.75	19	R	3413-138-19
4	13.75	21	R	3413-138-21
4	13.75	23	R	3413-138-23

DF 50AV (4-Stroke) 2015 ~
DF 60AV (4-Stroke) 2015 ~

AMITA 3

B	D	P	R	PART NO.
3	14	9	R	3411-140-09
3	14	11	R	3411-140-11

Replacement parts:

Kits for DF 50AV/60AV/90/100/115

	Thrust Washer	Spacer	Washer	Nut	Cotter Pin
D+	SDTW1	SDSP	YDWS	YENT	Epin(2*)

KITS part #: 17044501

Kits for DF 100A/115A/140A/140A/115B/and counter rotation Model Z

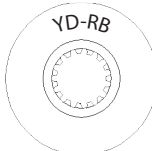
	Thrust Washer	Spacer	Washer	Nut	Cotter Pin
D+	SDTW2	SDSP	YDWS	YENT	Epin(2*)

KITS part #: 17044502

Kits for DF 70A/80A/90A/100B

	Thrust Washer	Spacer	Washer	Nut	Cotter Pin
D+	SDTW3	SDSP	YDWS	YENT	Epin(2*)

KITS part #: 17044503



*Original OEM hardware is required, or purchase the replacements

Interchangeable Hub Propellers

RUBEX ³	RBX ³	RBX ³	RBX ³
PART NO.	Hub kits	Hub kits	Hub kits
9411-139-17	RBX-150 or RBX-150B	RBX-125	RBX-126
9411-139-19		or RBX-125B	or RBX-126B
9411-139-21			
	DF 70A ...09 ~ DF 80A ...09 ~ DF 90A ...09 ~	DF 90 ...01~08 DF 100 ...09~12 DF 115 ...01~12	DF 115A ...2013~ DF 140 ...02~12 DF 140A ...2013~

Cotter Pin
(Original Part)
not included in kit

Nut
(Original Part)
not included in kit

Aft Spacer
(#81053441)
included in kit



RUBEX Propeller



RBX-150 **RBX-150B**
RBX Hub (#17015300) included in kit
RBX Hub (#17015304) included in kit

For Salt water



Thrust Washer
(#81013441)
included in kit

Cotter Pin
(Original Part)
not included in kit

Nut
(Original Part)
not included in kit

Flat Washer
(#81061140)
included in kit

Aft Spacer
(#81053150)
included in kit



RUBEX Propeller



RBX-125 **RBX-126** **RBX-125B** **RBX-126B**

RBX Hub
(#17015300)
included in kit

RBX Hub
(#17015304)
included in kit

For Salt water

RBX-125 **RBX-125B** **RBX-126** **RBX-126B**

Thrust Washer
(#81013440)
included in kit

Thrust Washer
(#81013150)
included in kit

E 150~225 Horsepower / 4-3/4" Gearcase (15 Tooth Spline & Thru Hub Exhaust)
DF 150, 175, 200, 225 All Year

Pressed-in Propellers

AMITA 3-E Plus

B	D	P	R	PART NO.
3	16	13	R	4511-160-13
3	15.8	15	R	4511-158-15
3	15.8	15	L	4512-158-15
3	15.5	17	R	4511-155-17
3	15.5	17	L	4512-155-17
3	15.3	19	R	4511-153-19
3	15.3	19	L	4512-153-19
3	15.3	21	R	4511-153-21
3	15.3	21	L	4512-153-21
3	15.3	23	R	4511-153-23

Replacement parts:

	Thrust Washer	Spacer	Washer	Nut	Cotter Pin
E	SETW	SESP	YDWS	YENT	Epint(2")

KITS part #: 17045501

*Original OEM hardware is required, or purchase the replacements

Interchangeable Hub Propellers

RUBEX 3 Plus RBX

PART NO.	Hub kits
9511-160-13	RBX-104 + or RBX-104B
9511-158-15	
9512-158-15	
9511-155-17	
9512-155-17	
9511-153-19	
9512-153-19	
9511-153-21	
9512-153-21	
9511-153-23	



Cotter Pin
(Original Part)
not included in kit



Nut
(Original Part)
not included in kit

Aft Spacer
(#81053450)
included in kit



RUBEX Propeller



RBX-104

RBX Hub
(#17015300)
included in kit



RBX-104B

RBX Hub
(#17015304)
included in kit
For Salt water



Thrust Washer
(#81013450)
included in kit

E 150~225 Horsepower / 4-3/4" Gearcase (15 Tooth Spline & Thru Hub Exhaust)

DT 150 86 ~ 03

DT 200 86 ~ 00

DT 175 86 ~ 92

DT 225 86 ~ 03

Pressed-in Propellers

AMITA 3

B	D	P	R	PART NO.
3	15.5	11	R	
3	15.3	13	R	
3	15.5	13	R	4511-155-13
3	15	15	R	4511-150-15
3	15	15	L	4512-150-15
3	14.8	17	R	4511-148-17
3	14.8	17	L	4512-148-17
3	14.5	19	R	4511-145-19
3	14.5	19	L	4512-145-19
3	14.3	21	R	4511-143-21
3	14.3	21	L	4512-143-21
3	14.2	23	R	4511-142-23
3	14.2	23	L	4512-142-23

AMITA 4

B	D	P	R	PART NO.
4	14.75	15	R	4513-148-15
4	14.75	15	L	4514-148-15
4	14.5	17	R	4513-145-17
4	14.5	17	L	4514-145-17
4	14.25	19	R	4513-143-19
4	14.25	19	L	4514-143-19
4	14	21	R	4513-140-21
4	14	21	L	4514-140-21
4	14	23	R	4513-140-23

Replacement parts:

	Thrust Washer	Spacer	Washer	Nut	Cotter Pin
	SETW	SESP	YDWS	YENT	EpIn(2")
E					

KITS part #: 17045501

*Original OEM hardware is required, or purchase the replacements

Interchangeable Hub Propellers

RUBEX ³	RBX [™]
PART NO.	Hub kits
9511-155-11	
9511-153-13	
9511-150-15	
9512-150-15	
9511-148-17	RBX-104
9512-148-17	+ or
9511-145-19	RBX-104B
9512-145-19	
9511-143-21	
9512-143-21	
9511-142-23	
9512-142-23	

RUBEX ⁴	RBX [™]
PART NO.	Hub kits
9513-148-15	
9514-148-15	
9513-145-17	
9514-145-17	RBX-104
9513-143-19	+ or
9514-143-19	RBX-104B
9513-140-21	
9514-140-21	





PRO SERIES

High Precision Blade for High Performance

- Lab Finished Pro series with precise pitch and cup control for single and multi-engine applications.
- Patented SOLAS Adjustable Vents(SAV) fine tune the amount of venting to decrease planning time.
- Longer barrel to maximize acceleration.
- Much more aggressive camber and cupping for top performance and speed.

PRO3 SAV System Lab finished

B	D	P	R	PART NO.
3	15 1/4	19	R	9575-153-19
3	15 1/4	19	L	9576-153-19
3	15	21	R	9575-150-21
3	15	21	L	9576-150-21
3	14 3/4	23	R	9575-148-23
3	14 3/4	23	L	9576-148-23
3	14 1/2	25	R	9575-145-25
3	14 1/2	25	L	9576-145-25

PRO4 SAV System Lab finished

B	D	P	R	PART NO.
4	15	18	R	9577-150-18
4	15	18	L	9578-150-18
4	15	20	R	9577-150-20
4	15	20	L	9578-150-20
4	15	22	R	9577-150-22
4	15	22	L	9578-150-22
4	15	24	R	9577-150-24
4	15	24	L	9578-150-24
4	15	26	R	9577-150-26
4	15	26	L	9578-150-26
4	15	28	R	9577-150-28
4	15	28	L	9578-150-28

HOW TO CHOOSE A RUBEX™ HUB

BRONZE	OR	ALUMINUM
		
<p>Suggested for :</p> <ul style="list-style-type: none"> > High Horsepower (115 & Up) > Extreme Use > Saltwater / Freshwater Use > Stainless Steel Propellers 		<p>Suggested for :</p> <ul style="list-style-type: none"> > Low to High Horsepower > Regular Use > Freshwater & Occasional Saltwater Use > Aluminum & Stainless Steel Propellers

THE "B" found at the end of the RUBEX hub kit number denotes that the hub has a bronze core. RUBEX hub kits with a "B" will fit the same applications as its none "B" counterpart.

* SUZUKI Cross Reference Application Guide *

To choose a suitable prop pitch compared to the O/E part number, we suggest you consult with your local dealer for further details.

Category	Engine HP	O/E Part Number	B	D	P	R	Type	(Aluminum)		Nearest Solas Match (Stainless Steel)				
								Amita 3	Amita 4	New Saturn	Titan	HR Titan 3	HR Titan 4	
A	DT 9.9, D T15 DF 9.9, DF 15 Thru-Hub <i>DT 9.9C & 9.9CM Not Applicable</i>	58100-93703-019	3	9 1/4	7	R	Alum	4111-093-07	4113-093-07	4121-093-07				
		58100-91D00-019	3	9 1/4	8	R	Alum	4111-093-08	4113-093-08	4121-093-08				
		58100-93723-019	3	9 1/4	9	R	Alum	4111-093-09	4113-093-09	4121-093-09				
		58100-93733-019	3	9 1/4	10	R	Alum	4111-093-10	4113-093-10	4121-093-10				
		58100-93743-019	3	9 1/4	11	R	Alum	4111-093-11	4113-093-11	4121-093-11				
		58100-93763-019	3	9 1/4	9	R	Hvy Dty Alum	4111-093-09	4113-093-09	4121-093-09				
		58100-93773-019	3	9 1/4	10	R	Hvy Dty Alum	4111-093-10	4113-093-10	4121-093-10				
		-	4	10	6 1/2	R	Alum		4113-100-07					
		DT 20, 25, 25C	3	10 1/4	10	R	Alum					4231-108-10		
		DT 30, 30C	3	10 1/4	11	R	Alum		4211-105-11	4213-102-11		4231-105-11		
B	DF 25, 30 Thru-Hub	58100-96420-019	3	10 1/4	11	R	Alum	4211-105-11	4213-102-11					
		58100-96430-019	3	10 1/4	12	R	Alum	4211-103-12	4213-101-12					
		58100-96440-019	3	10 1/4	13	R	Alum	4211-101-13	4213-100-13					
		58100-95D00-019	3	10 1/4	14	R	Alum	4211-100-14	4213-100-14					
		58100-96460-019	3	10 1/4	15	R	Alum		4213-100-15					
		58100-96470-019	3	10 1/4	10	R	Hvy Dty Alum				4231-108-10			
		58100-96480-019	3	10 1/4	12	R	Hvy Dty Alum	4211-103-12	4213-101-12		4231-103-12			
		58100-96490-019	3	10 1/4	13	R	Hvy Dty Alum	4211-101-13	4213-100-13		4231-101-13			
		58100-96400-019	3	10 1/4	13	R	S/S				4231-101-13			
		99105-00600-12P	3	10 1/4	12	R	S/S				4231-103-12			
99105-00600-13P	3	10 1/4	13	R	S/S				4231-101-13					
99105-00600-14P	3	10 1/4	14	R	S/S				4231-100-14					
99105-00600-15P	3	10 1/4	15	R	S/S				4231-100-15					



Original Part No.



Recommended Solas Propeller



Other Applicable Solas Propeller

Propeller Choosing Guide :

1. Check the engine horse power or the present propeller part number.
2. Find the propeller type may be suitable for your application.
3. When looking for a direct replacement, you may check the recommended propeller column.
4. The O/E part number may be changed due to different O/E tool status.
5. This table should only be used as a general reference. The exact condition may be changed due to different applications.

NOTE : AAAA-BBB-CC Recommended SOLAS Propeller

AAAA-BBB-CC

AAAA-BBB-CC

Other Applicable SOLAS Propeller

Suzuki

		Suzuki Propeller						SOLAS Match				SOLAS Match			
Category	Engine HP	O/E Part Number	B	D	P	R	Type	(Aluminum)		Titan	Nearest Solas Match (Stainless Steel)				
								Amita 3	Amita 4		Saturn	New Saturn	HR Titan 3	HR Titan 4	
C	DT40, 50, 50M	58100-94302-019	3	11 1/2	9	R	Alum	4313-118-09			4331-120-09				
	DT55, 60	58100-95212-019	3	11 1/2	10	R	Alum	4311-120-10	4313-114-10		4331-119-10				
	DT 65	58100-95222-019	3	11 1/2	11	R	Alum	4311-118-11	4313-111-11		4331-116-11				
		58100-95393-019	3	11 5/8	12	R	Alum	4311-116-12	4313-108-12		4331-114-12				
		58100-94313-019	3	11 1/2	13	R	Alum	4311-116-13	4313-105-13		4331-111-13				
		58100-95353-019	3	11 3/8	14	R	Alum	4311-116-14	4313-105-14		4331-111-14				
		58100-95363-019	3	11 1/4	15	R	Alum				4331-110-15				
		58100-95373-019	3	11 1/8	16	R	Alum								
		58100-94401-019	3	11 1/2	13	R	S/S				4331-111-13				
		58100-94411-019	3	11 3/8	14	R	S/S				4331-111-14				
		99105-00500-12P	3	11 3/4	12	R	S/S				4331-114-12				
		99105-00500-13P	3	11 3/4	13	R	S/S				4331-111-13				
		99105-00500-14P	3	11 3/4	14	R	S/S				4331-111-14				
		99105-00500-15P	3	11 3/4	15	R	S/S				4331-110-15				
	D	DT 75, 85, 90	58100-94500-019	3	13 1/2	15	R	V1500	4411-135-15	4413-130-15		4431-135-15			
DT 100, 115		58100-94512-019	3	13 1/4	17	R	V1700	4411-133-17	4413-128-17		4431-133-17				
DT 140		58100-94522-019	3	13	19	R	V1900	4411-130-19	4413-125-19		4431-130-19				
DF 60, DF 70		58100-94532-019	3	13	21	R	V2100	4411-130-21	4413-125-21		4431-130-21				
		58100-95540-019	3	13 3/4	13	R	U1300	2411-138-13	2413-133-13		2431-138-13				
		58100-95500-019	3	13 1/2	15	R	U1500	2411-135-15	2413-130-15		2431-135-15				
		58100-95511-019	3	13 1/4	17	R	U1700	2411-133-17	2413-128-17		2431-133-17				
		58100-95521-019	3	13	19	R	U1900	2411-130-19	2413-125-19		2431-130-19				
		58100-95530-019	3	13	21	R	U2100	2411-130-21	2413-125-21		2431-130-21				
		58100-94554-019	3	13 1/2	15	R	S/S				4441-138-15				
		58100-94581-019	3	13 1/4	17	R	S/S				4441-133-17				
		58100-94561-019	3	13	19	R	S/S				4441-130-19				
		58100-94571-019	3	13	21	R	S/S				4441-133-19				
		99105-00100-12P	3	13 1/4	12	R	S/S				4431-130-21				
		99105-00100-14P	3	13 1/4	14	R	S/S				4431-140-11				
	99105-00100-16P	3	13 1/4	16	R	S/S				4431-138-13			4453-135-13		
	99105-00100-18P	3	13 1/4	18	R	S/S				4431-135-15			4453-133-15		
	99105-00101-20P	3	13 1/4	20	R	S/S				4431-133-17			4453-130-17		
	99105-00100-22P	3	13 1/4	22	R	S/S				4431-130-19			4453-130-19		
	58100-90J40-019	3	13 1/2	15	R	Alum		3413-138-15		4431-130-21			4453-130-21		
DF90, DF115	58100-90J00-019	3	14	17	R	Alum		3413-138-17					3451-139-17		
DF140	58100-90J10-019	3	14	19	R	Alum		3413-138-19					3451-139-19		
	58100-90J20-019	3	14	21	R	Alum		3413-138-21					3451-139-21		
	58100-90J22-019	3	14	23	R	Alum							3451-139-23		
	99105-00700-18P	3	14	18	R	S/S							3451-139-17		
	99105-0070L-18P	3	14	18	L	S/S							3452-139-17		
	99105-00700-20P	3	14	20	R	S/S							3451-139-19		
	99105-0070L-20P	3	14	20	L	S/S							3452-139-19		
	99105-00700-22P	3	14	22	R	S/S							3451-139-21		
	99105-0070L-22P	3	14	22	L	S/S							3452-139-21		
	99105-00700-24P	3	14	24	R	S/S							3451-139-23		

To choose a suitable prop pitch compared to the O/E part number, we suggest you consult with your local dealer for further details.

		Suzuki Propeller										SOLAS Match										SOLAS Match									
Category	Engine HP	O/E Part Number	B	D	P	R	Type	(Aluminum)		Nearest Solas Match (Stainless Steel)		Titan	HR Titan 3	HR Titan 4	(Aluminum)		Nearest Solas Match (Stainless Steel)		Titan	HR Titan 3	HR Titan 4										
								Amita 3	Amita 4	LEXOR 3	LEXOR 4				Amita 3	Amita 4	LEXOR 3	LEXOR 4													
E	DT 150, 200 DT 225	58200-87D61-019	3	14 1/2	16	R	S/S	4511-150-15	4513-148-15				4531-143-17	4551-148-16	4553-145-15	4511-150-15	4513-148-15				4531-143-17	4551-148-16	4553-145-15								
		58200-87D62-019	3	14 1/2	16	L	S/S	4512-150-15	4514-148-15				4532-143-17	4552-148-16	4554-145-15	4511-148-17	4513-145-17				4531-140-19	4551-148-18	4553-143-17								
	Non-4 Stroke	58200-87D01-019	3	14 1/2	18	R	L	S/S	4512-148-17	4514-145-17				4532-140-19	4552-148-18	4554-143-17	4511-145-19	4513-143-19				4531-140-21	4551-148-20	4553-141-19							
		58200-87D02-019	3	14 1/2	18	L	S/S	4512-148-17	4514-145-17				4532-140-19	4552-148-18	4554-143-17	4511-145-19	4513-143-19				4531-140-21	4551-148-20	4553-141-19								
		58200-87D11-019	3	14 1/2	20	R	L	S/S	4511-145-19	4514-143-19				4531-140-21	4551-148-20	4553-141-19	4511-143-21	4513-140-21				4531-140-23	4551-143-22	4553-140-21							
		58200-87D12-019	3	14 1/2	20	L	S/S	4511-145-19	4514-143-19				4531-140-21	4551-148-20	4553-141-19	4511-143-21	4513-140-21				4531-140-23	4551-143-22	4553-140-21								
		58200-87D21-019	3	14 1/2	22	R	L	S/S	4512-143-21	4514-140-21				4532-140-23	4552-148-24	4554-140-23	4511-158-15				4531-140-23	4551-148-24	4553-140-21								
		58200-87D22-019	3	14 1/2	22	L	S/S	4512-143-21	4514-140-21				4532-140-23	4552-148-24	4554-140-23	4511-158-15				4531-140-23	4551-148-24	4553-140-21									
		99105-00200-16P	3	14 1/4	16	R	R	S/S	4512-158-15								4552-148-16	4554-145-15				4531-143-17	4551-148-18	4553-143-17							
		99105-00200-18P	3	14 1/4	18	R	R	S/S	4511-155-17								4551-148-18	4553-143-17				4531-143-17	4551-148-18	4553-143-17							
	99105-00200-20P	3	14 1/4	18	L	R	S/S	4512-155-17								4551-148-18	4553-143-17				4531-143-17	4551-148-18	4553-143-17								
	99105-00200-22P	3	14 1/4	20	R	R	S/S	4511-153-19								4551-148-20	4553-141-19				4531-143-17	4551-148-20	4553-141-19								
	99105-00200-24P	3	14 1/4	22	R	L	S/S	4512-153-19								4552-148-20	4554-141-19				4531-143-17	4552-148-20	4554-141-19								
	99105-00200-26P	3	14 1/4	24	R	L	S/S	4511-153-23								4552-148-20	4554-141-19				4531-143-17	4552-148-20	4554-141-19								
	99105-00200-26P	3	14 1/4	26	R	R	S/S									4551-143-22	4553-140-21				4531-143-17	4551-143-22	4553-140-21								
	99105-00200-26P	3	14 1/4	26	L	R	S/S									4552-148-20	4554-141-19				4531-143-17	4552-148-20	4554-141-19								
	E	Engine HP	58200-93L00-000	3	16	17	R	S/S								4571-160-17	4571-160-19				4571-160-17	4571-160-19	4571-158-21								
			58200-93L10-000	3	16	18.5	R	S/S								4571-160-17	4571-160-19				4571-160-17	4571-160-19	4571-158-21								
			58200-93L20-000	3	16	20	R	S/S									4571-158-21	4571-156-23				4571-158-21	4571-156-23								
			58200-93L30-000	3	16	21.5	R	S/S									4571-156-23						4571-156-23								
58200-93L40-000			3	16	23	R	L	S/S								4572-160-17						4572-160-17									
58200-93LE0-000			3	16	17	L	S/S									4572-160-17						4572-160-17									
58200-93LA0-000			3	16	18.5	L	S/S									4572-160-17						4572-160-19									
58200-93LB0-000			3	16	20	L	S/S									4572-160-19						4572-160-19									
58200-93LC0-000			3	16	21.5	L	S/S									4572-158-21						4572-158-21									
58200-93LD0-000			3	16	23	L	S/S									4572-156-23						4572-156-23									
58200-96J00-000			3	15 1/2	17	R	R	S/S								4571-155-17						4571-155-17									
58200-96J10-000			3	15 1/4	19	R	R	S/S								4571-153-19						4571-153-19									
58200-96J20-000			3	15	21	R	R	S/S								4571-150-21						4571-150-21									
58200-96J30-000			3	14 3/4	23	R	R	S/S								4571-148-23						4571-148-23									
58200-96J40-000			3	14 1/2	25	R	R	S/S								4571-145-25						4571-145-25									
58200-96J50-000			3	14 1/2	27	R	R	S/S								4571-145-27						4571-145-27									
58200-96J60-000			3	15 1/2	17	L	S/S									4572-155-17						4572-155-17									
58200-96J70-000			3	15 1/4	21	L	S/S									4572-153-19						4572-153-19									
58200-96J80-000			3	14 3/4	23	L	S/S									4572-148-23						4572-148-23									
58200-96JE0-000			3	14 1/2	25	L	S/S									4572-145-25						4572-145-25									
58200-96JF0-000	3	14 1/2	27	L	S/S									4572-145-27						4572-145-27											
58300-93J00-000	4	15 1/4	18	R	R	S/S								4573-153-18						4573-153-18											
58300-93J10-000	4	15 1/4	20	R	R	S/S								4573-153-20						4573-153-20											
58300-93J20-000	4	15 1/4	22	R	R	S/S								4573-153-22						4573-153-22											
58300-93J30-000	4	15 1/4	24	R	R	S/S								4573-153-24						4573-153-24											
58300-93J40-000	4	15 1/4	26	R	R	S/S								4573-153-26						4573-153-26											
58300-93JA0-000	4	15 1/4	20	L	L	S/S								4574-153-20						4574-153-20											
58300-93JB0-000	4	15 1/4	22	L	L	S/S								4574-153-22						4574-153-22											
58300-93JC0-000	4	15 1/4	24	L	L	S/S								4574-153-24						4574-153-24											
58300-93JD0-000	4	15 1/4	26	L	L	S/S								4574-153-26						4574-153-26											

Engine RPM Chart

ALWAYS CHECK YOUR OWNERS MANUAL FOR ACCURATE ENGINE RPM RANGES.

Evinrude RPM Chart			
HP/Model	Years	WOT RPM	Gear Ratio
5 4-Stroke	1999	5500-6500	2.23
5 4-Stroke	2000-2003	5000-6000	2.23
6 4-Stroke	1998-1999	5500-6500	2.23
6 4-Stroke	2000-2002	5000-6000	2.23
8 4-Stroke	1996-2002	5000-6000	2.42
9.8 4-Stroke	2012	5000-6000	2.08
9.8 4-Stroke	2013~	4500-6000	2.08/2.15
9.9	1974-1984	4500-5000	2.42
9.9	1985-2005	5000-6000	2.42
9.9 4-Stroke	1995-2001	5000-6000	2.42
15	1974-1980	5500-6500	2.42
15	1981-1993	5500-7000	2.42
15	1997-2005	5000-6000	2.42
15 4-Stroke	1995-2001	5000-6000	2.42
15 4-Stroke	2012	5000-6000	2.15
15 4-Stroke	2013~	4500-6000	2.08/2.15
25 4-Stroke	~	4700-5300	2.09
30 4-Stroke	~	5200-5800	2.27
40 4-Stroke	1999-2003	5200-5800	2.27
50 4-Stroke	1999-2003	5900-6500	2.27
65*	1984-2000	4500-5500	2.42
65*	2001	5000-6000	2.25
70 4-Stroke	1998	5000-6000	2.42
70 4-Stroke	1999-2003	5200-5800	2.42
90 Ficht	1998	4500-5500	2
90 Ficht	1999-2000	5500-6000	2
90 Ram	2001-2003	5250-5750	2
115 Ficht	1998	5000-6000	2
115 Ficht	1999-2000	5500-6000	2
115 Ram	2001-2003	5250-5750	2
150 Ficht	1999-2000	4800-5300	1.86
150 Ram	2001-2003	4750-5250	1.86
175 Ficht	1999-2000	5300-5800	1.86
175 Ram	2001-2003	5250-5750	1.86
200 Ficht	2001-2002	5500-6000	1.86
200 Ram	2003	5000-6000	1.85
225 Ficht	1999-2000	5500-6000	1.86
225 Ficht H.O	2003	5500-6000	1.86
225 Ram	2001-2003	5500-6000	1.86
250 Ficht	2000	5500-6000	1.86
250 Ram	2001-2003	5500-6000	1.86

* Commercial Models

Johnson RPM Chart			
HP/Model	Years	WOT RPM	Gear Ratio
2	~	4000-5000	1.85
3.3	~	4500-5500	1.85
3.5	~	4500-5500	1.85
4	1980-1983	4000-5000	1.65
5	~	4600-5400	1.92
6	1986-2005	4500-5500	2.23
6 4-Stroke	1997-2003	5500-6500	2.23
8	2000-2005	5000-6000	2.23
8 4-Stroke	1996-2004	5000-6000	2.42
9.9	2000-2005	5000-6000	2.42
9.9 4-Stroke	2002-2007	4500-5500	1.92
15	2000-2004	5000-6000	2.42
15	2005-2007	5500-6500	2.42
15 4-Stroke	2002-2007	5400-6000	1.92
25	1984-2005	4500-5500	2.15
25 3 Cyl.	1984-2005	5200-5800	2.15
25 4-Stroke	2004-2006	5000-5600	2.09
30	1984-2000	5200-5800	2.15
30	2001-2005	4500-5500	2.23
30 4-Stroke	2004-2007	5500-6100	2.09
35	1981-1983	5200-5800	1.93
40	1984-2005	4500-5500	2.42
40 4-Stroke	1999-2005	5200-5800	2.27
50	1975-2005	4500-5500	2.42
50 4-Stroke	1999-2005	5900-6500	2.27
60 3 Cyl.	1989-2003	5000-6000	2.42
60 4-Stroke	1998-2005	4700-5300	2.42
70 3 Cyl.	1974-2001	4500-5500	2.42
70 4-Stroke	1999-2005	5200-5800	2.42
90*	2001-2006	4500-5500	2
90 4-Stroke	2003-2005	4500-5500	2.59
115*	2001-2006	4500-5500	2
115 4-Stroke	2003-2005	5000-6000	2.59
135*	~	5000-6000	2.25
140 4-Stroke	2003-2005	5600-6200	2.38
150*	2003-2006	4500-5500	1.86
175*	2003-2006	4500-5500	1.86
200*	1987-2001	5000-6000	1.86
200 4-Stroke	2004-2005	5000-6000	2.29
225*	1986-2001	5000-6000	1.86
225 H.O	~	5000-6000	1.86
225 4-Stroke	2004-2005	5000-6000	2.29
250*	~	5000-6000	1.86

* Includes OceanPro

Yamaha RPM Chart			
HP/Model	Years	WOT RPM	Gear Ratio
4	1986-1999	4500-5500	2.08
F4 4-Stroke	1999-2014	4000-5000	2.08
F4 4-Stroke	2015~	4500-5500	2.08
5	1995-2002	4500-5500	2.08
F6 4-Stroke	1986~	4500-5500	2.08
F6A 4-Stroke	2012~	4500-5500	2.08
8	1986~	4500-5500	2.08
F8 4-Stroke	1986~	5000-6000	2.08
9.9	1984~	4500-5500	2.08
F9.9 4-Stroke	1986-2007	4500-5500	2.08
F9.9 4-Stroke	2008~	5000-6000	2.08
15	1984~	4500-5500	2.08
F15 4-Stroke	2000-2006	4500-5500	2.08
F15 4-Stroke	2007~	5000-6000	2.08
F20 4-Stroke	2007~	5000-6000	2.08
25	1988	4500-5500	2.08
F25 4-Stroke	1998-2006	5000-6000	2.08
F25 4-Stroke	2010~	5000-6000	2.08
T25 HT	2010~	5000-6000	2.42
30	1979-2002	4500-5500	1.85
F30 4-Stroke	2001-2005	5000-6000	2
F30 4-Stroke	2015~	5000-6000	2
40	1984~	4500-5500	1.85
F40 4-Stroke	1999~	5000-6000	2
50	1984~	4500-5500	1.85
F50 4-Stroke	1995~	5000-6000	1.85
T50 HT	1996~	5000-6000	2.33
55	1976-1995	4500-5500	1.84
60	1976-1991	4500-5500	2.33
F60 4-Stroke	1999~	5000-6000	1.85
T60 HT	2003~	5000-6000	2.33
70	2000~	5000-6000	2.33
F70 4-Stroke	2010~	5300-6300	2.33
F75 4-Stroke	2003-2012	5000-6000	2.31
F75 4-Stroke	2013~	5000-6000	2.27
F80 4-Stroke	1999-2002	5000-6000	2.31
85	1991-1997	4500-5500	2
90	1984~	4500-5500	2
F90 4-Stroke	2003~	5000-6000	2.27
F100 4-Stroke	1999~	5000-6000	2.31
115	1994~	4500-5500	2
F115 4-Stroke	2000-2014	5000-6000	2.15
F115 4-Stroke	2015~	5300-6000	2.15
130	2001-2003	5000-6000	2
F150 4-Stroke	2004~	5000-6000	2
175 HDPI	2007~	4500-5500	1.86
F175 4-Stroke	2014~	5000-6000	1.86
200	1984~	4500-5000	1.86
200 HPDI	2000~	4500-5500	1.86
F200 4-Stroke	2002-2012~	5000-6000	2
F200 4-Stroke	2013~	5000-6000	1.86
225	2006~	5000-6000	1.75
F225 4-Stroke	2002~	5000-6000	2
F225 Offshore	2010~	5000-6000	1.75
250 HPDI	2003~	4500-5500	1.81
F250 4-Stroke	2002~	5000-6000	2
F250 Offshore	2010~	5000-6000	1.75
300 HPDI	~2004	4500-5500	1.75
300 HPDI	2005~	4650-5650	1.75
F300 4-Stroke	2009-2012	5000-6000	1.75
F300 Offshore	2013~	5000-6000	1.75

Yamaha V Max Rpm Chart			
HP/Model	Years	WOT RPM	Gear Ratio
150 TRP	~	4500-5500	2
150	~	4500-5500	2
150 EFI	~	4500-5500	2
175	~	4500-5500	2
150 HPDI	~	4500-5500	2
175 HPDI	~	4500-6000	1.86
200 HPDI	~	4500-5500	1.86
200 3.1 EFI	~	4500-5500	1.81
225 3.1 EFI	~	4500-5500	1.81
250 3.1 EFI	~	4500-5500	1.75
200 2.6 HPDI	2002-2004	4500-5500	1.86
200 3.3 HPDI	2005	4500-5500	1.81
200 3.3 HPDI	2006~	5000-6000	1.81
225 3.3 HPDI	~2005	4500-5500	1.75
225 3.3 HPDI	2006~	5000-6000	1.75
250 3.3 HPDI	~2005	4500-5500	1.75
250 3.3 HPDI	2006~	5000-6000	1.75
300 3.3 HPDI	~2004	4500-5500	1.75
300 3.3 HPDI	2005	4650-5650	1.75
300 3.3 HPDI	2006~	5000-6000	1.75
150 SHO	~	5000-6000	2
200 SHO	~	5000-6000	1.75
225 SHO	~	5000-6000	1.75
250 SHO	~	5000-6000	1.75

Yamaha Sterndrive RPM Chart		
HP/Model	Years	WOT RPM
3.0L(130HP)	1989-1993	4200-4600
4.3L(205HP)	1989-1993	4200-4800
5L(205HP)	1989-1993	4200-4600
5.7L(260HP)	1989-1993	4200-4600

Engine RPM Chart

Mercury RPM Chart			
HP/Model	Years	WOT RPM	Gear Ratio
4	1973-1975	4500-5500	2
6	1994-2003	4000-5000	2
8	1994-2005	4500-5500	2
8 4-Stroke	1995-2004	4500-5500	2
8 4-Stroke	2005~	5000-6000	2.08
9.9	1993-2005	5000-6000	2
9.9 4-Stroke	1995-2004	4500-5500	2.01
9.9 4-Stroke	2005~	5000-6000	2.08
9.9 Bigfoot	2006~	5000-6000	2.42
15	1994-2005	5000-6000	2
15 4-Stroke	1989-2006	4500-5500	2
15 4-Stroke	2007~	5000-6000	2.15
20	1986-2005	4500-5500	2.25
20 4-Stroke	2009-2013	5250-6250	2.15
20 4-Stroke	2014~	5400-6100	2.15
25	1985-2005	5000-6000	2.25
25 4-Stroke	2004-2005	5500-6000	2.42
25 4-Stroke	2006~	5000-6000	1.92
25 Bigfoot	1999-2001	5500-6000	2.4
25 Bigfoot	2002-2003	5250-5750	2.4
30	1994-2002	4500-5500	2.25
30 4-Stroke	1999-2005	5500-6000	2
30 4-Stroke	2006~	5250-6250	1.92
40	2001-2002	4500-5500	2
40	2004-2005	5000-5500	1.83
40 4-Stroke	1997~	5500-6000	2
40 EFI Bigfoot	2004~	5500-6000	2.33
40 EFI CT	2014~	5500-6000	2.33
50	1991~	5000-5500	1.83
50 4-Stroke	1998~	5500-6000	1.83
50 Bigfoot	~	5500-6000	2.33
50 EFI CT	2014~	5500-6000	2.33
60	1991-2005	5000-5500	1.64
60 4-Stroke	2001~	5500-6000	1.83
60 Bigfoot	2001~	5500-6000	2.33
60 EFI CT	2014~	5500-6000	2.33
75	1990-2005	4750-5250	2.3
75 4-Stroke	2004-2006	4500-5500	2.33
75 4-Stroke	2007-2014	5000-6000	2.33
75 4-Stroke	2015~	4500-5500	2.07
90	1989-2004	5000-5500	2.3
90	2005~	5000-5500	2.33
90 4-Stroke	2004~	5000-6000	2.33
90 EFI CT	2014~	5000-6000	2.38
100	1989~	4750-5250	2.3
115	1989-2005	4750-5250	2.07
115 4-Stroke	2001-2006	5000-6000	2.07
115 4-Stroke	2007-2014	5800-6400	2.07
115 4-Stroke	2015~	5000-6000	2.07
115 EFI CT	2014~	5000-6000	2.38
125	1994-2005	4750-5250	2.07
135	1990-1996	5000-5600	2
150 EFI	2004	5000-6000	1.87
150 EFI	2005	5000-5600	1.87
175	1990-1999	5000-5600	1.87
175 EFI	2000-2002	5000-5600	1.87
200	1991-2005	5000-5600	1.87
200 EFI	1994-2002	5000-5800	1.87
225	1996-1998	5000-5500	1.64
225 EFI	1996-2004	5000-5800	1.75

Mercury Optimax RPM Chart			
HP/Model	Years	WOT RPM	Gear Ratio
75	2004~	5000-5750	2.33
90	2005~	5000-5750	2.33
115	2007~	5000-5700	2.07
115 PRO XS	2015~	5000-5750	2.07
125	2011~	5000-5750	2.07
135	1996-2007	5000-5600	2
135	2008~	5250-5750	2
150	2004~	5250-5750	1.87
150 PRO XS	2011~	5250-5750	1.87
175	2000-2010	5250-5750	1.87
175 PRO XS	2008~	5250-5750	1.87
200	1998~	5000-5750	1.75
200 PRO XS	2011-2012	5500-6000	1.75
200 PRO XS	2013~	5000-5750	1.75
225	1998-2012	5000-5750	1.75
225 PRO XS	2006~	5500-6000	1.75
250	2007~	5500-6000	1.75
250 PRO XS	2007~	5500-6000	1.75

Mercuriuser RPM Chart			
HP/Model	Years	WOT RPM	Gear Ratio
3.0 L 135	~	4400-4800	2.00 A1
4.3 L 190	~	4400-4800	1.81 A1
4.3 LH 205	~	4400-4800	1.62 A1
4.3 LEF210	~	4400-4800	1.62 A1
4.3 L MPI 220	~	4400-4800	1.62 A1
5.0 L 220	~	4400-4800	1.62 A1
5.0 L 220	~	4400-4800	1.65 B1
5.0 LEFI 240	~	4400-4800	1.47 A1
5.0 LEFI 240	~	4400-4800	1.65 B1
5.0 L MPI 260	~	4600-5000	1.62 A1
5.0 L MPI 260	~	4600-5000	1.50 B1
5.7 L 250	~	4400-4800	1.47 A1
5.7 L 250	~	4400-4800	1.65 B1
5.7 L EFI 260	~	4400-4800	1.47 A1
5.7 L EFI 260	~	4400-4800	1.65 B1
350 Mag MPI 300	~	4800-5200	1.47A1
350 Mag MPI 300	~	4800-5200	1.50 B1
350 Horizon 300	~	4600-5000	1.47A1
350 Horizon 300	~	4600-5000	1.50 B1
MX 6.2 L MPI 320	~	4800-5200	1.65 B1
496 Mag 375	~	4400-4800	1.5 B1
496 Mag HK 425	~	4600-5000	1.5 B1

Mercury Verado RPM Chart			
HP/Model	Years	WOT RPM	Gear Ratio
135	2007-2010	5200-6400	2.08
150	2006~	5800-6400	2.08
175	2006~	5800-6400	2.08
200	2005~	5800-6400	2.08
200 PRO	2015~	5800-6400	1.85
225	2005~	5800-6400	1.85
250	2005~	5800-6400	1.85
250 PRO	2011~	5800-6400	1.85
275	2005-2010	5800-6400	1.85
300	2008~	5800-6400	1.75 / 1.85
300 PRO	2011~	5800-6400	1.75

Honda RPM Chart			
HP/Model	Years	WOT RPM	Gear Ratio
BF 8	1987-1999	4950-5500	2.4
BF 9.9	1988-1999	4500-5500	2.1
BF 9.9	2000~	5000-6000	2.33
BF 15	1991-2002	5000-6200	2.1
BF 15	2003~	4500-5500	2.08
BF 20	2003~	5000-6000	2.08
BF 25	1994~	5000-6000	2.08
BF 30	1995-1999	5500-6000	2.08
BF 30	2000-2005	5700-6200	2.08
BF 30	2006~	5000-6000	2.08
BF 35	1991-1994	4600-5600	2.09
BF 40	1995~	5000-6000	2.09
BF 45	1991-1994	5000-6000	2.09
BF 50 / 50 A	1995~	5500-6000	2.09
BF 60	2010~	5000-6000	2.07
BFP 60	2010~	5000-6000	2.33
BF 75	1995~	5000-6000	2.33
BF 90	1995-2002	5000-6000	2.33
BF 90	2003-2006	5000-6000	2.3
BF 90	2007~	5300-6300	2.33
BF 115	1998-2010	5000-6000	2
BF 115	2011~	4500-6000	2.14
BF 130	1998-2004	5000-6000	2
BF 135	2004~	5000-6000	2.14
BF 150	2004~	5000-6000	2.14
BF 200	2002~	5000-6000	1.86
BF 225	2002~	5000-6000	1.86
BF 250	2012~	5300-6300	2

Volvo RPM Chart			
HP/Model	Years	WOT RPM	Gear Ratio
3.0 L GS	1994~	4200-4600	1.97 / 2.18
3.0L Gxi	2010	4400-4800	
4.3L GL	1994~	4200-4600	
4.3L GS	1994-1999	4400-4800	
4.3L Gi	1996-2002	4400-4800	
4.3L Gxi	2002~	4400-4800	
5.0L FL	1994~	4200-4600	1.66
5.0L Fi	1994~	4200-4600	1.66
5.0L GL	1998~	4400-4800	1.51 / 1.60
5.0L Gi	1998-1999	4400-4800	1.51 / 1.60
5.0L Gxi	2002~	4600-5000	1.51 / 1.60
5.7L GL	1994-1996	4200-4600	1.6
5.7L Gil	1997~	4200-4600	1.6
5.7L Gi	1996-1997	4200-4600	1.51
5.7L Gi	2002~	4600-5000	1.43
5.7L GS	1997	4200-4600	1.51
5.7L GS	1998~	4400-4800	1.51 / 1.43
5.7L Gsi	1997~	4600-5000	1.43
5.7L Gxi	2001~	4600-5000	1.43
5.8L FL	1994-1997	4000-4400	1.51
5.8L Fsi	1995	4600-5000	1.43
5.8L FSi	1996-1997	4200-4600	1.51
7.4L GL	1997	4200-4600	1.43
7.4L Gi	1997-2001	4200-4600	1.43
7.4L Gsi	1997	4800-5200	1.43
8.2L Gsi	1997	4600-5000	1.43

Suzuki RPM Chart			
HP/Model	Years	WOT RPM	Gear Ratio
DF 9.9	1997-2000	4500-5500	1.92
DF 9.9	2001-2008	5400-6000	1.92
DF 9.9	2009	4900-5500	2.08
DF 9.9	2010~	5200-6200	2.08
DF 9.9A	2010~	5200-6200	2.08
DF 9.9B	2014~	5000-6000	2.08
DF 9.9BT	2015~	4700-5700	2.08
DF 9.9TH	2015~	4500-5500	2.08
DF 15	1997-2001	5400-6000	1.92
DF 15A	2013~	5000-6000	2.08
DF 20A	2013~	5000-6000	2.08
DF 20AT	2015~	5300-6300	2.08
DF 25	2000-2006	4700-5300	2.27
DF 25	2007-2008	4500-5500	2.09
DF 25	2009~	4700-5300	2.09
DF 25A	2014~	5000-6000	2.09
DF 30	2000-2007	5500-6100	2.27
DF 30A	2014~	5300-6300	2.09
DF 40	1999-2009	5200-5800	2.27
DF 40A	2010~	5000-6000	2.27
DF 50	1999-2009	5900-6500	2.27
DF 50A	2010~	5300-6300	2.27
DF 50AV	2014~	5300-6300	2.42
DF 60	1998-2009	4700-5300	2.42
DF 60A	2010~	5300-6300	2.27
DF 60AV	2014~	5300-6300	2.42
DF 70	1998-2008	5200-5800	2.42
DF 70A	2009~	5000-6000	2.59
DF 80A	2009~	5000-6000	2.59
DT 85	1991-2000	5000-6000	2.08
DF 90	2001-2008	4500-5500	2.59
DF 90A	2009~	5300-6300	2.59
DT 100	1991-2000	5250-5750	2.08
DF 115	2001-2012	5000-6000	2.59
DF 115A	2013~	5000-6000	2.59
DF 140	2002-2012	5600-6200	2.59
DF 140A	2013~	5600-6200	2.59
DT 150 EFI	1995-2003	4500-5500	1.86
DF 150	2006~	5000-6000	2.50
DF 175	2006~	5500-6100	2.50
DF 175 TG	2014~	5500-6100	2.50
DF 200	2004~	5000-6000	2.29
DF 200A	2015~	5500-6100	2.50
DF 225	2004~	5000-6000	2.29
DF 250	2004~	5500-6100	2.29
DF 250AP	2014~	5500-6100	2.08
DF 300	2007-2011	5700-6300	2.08
DF 300A	2012~	5700-6300	2.08
DF 300AP	2014~	5700-6300	2.08
DF 300B	2019~	5300-6300	2.29
DF 325A	2018~	5300-6300	2.29
DF 350A	2017~	5700-6300	2.29

SOLAS[®]

Where Speed Begins



Suzuki is a registered trademark of the Suzuki Motor Corp.



SOLAS SCIENCE & ENGINEERING CO.,LTD.

37, 35th Road, Taichung Industrial Park, 40768 Taichung, Taiwan
Tel : +886-4-2359-7455 | Fax : +886-4-2359-7535 | E-mail : market@solas.com.tw

SOLAS Marine Inc. (USA)

601 Hanover Dr. Suite 100, Grapevine, TX 76051 USA
TEL : (214)769-7583 | E-mail : jerry_hsu@solas.com.tw



rubexprops.com



solas.com



9990429 SEP.2024